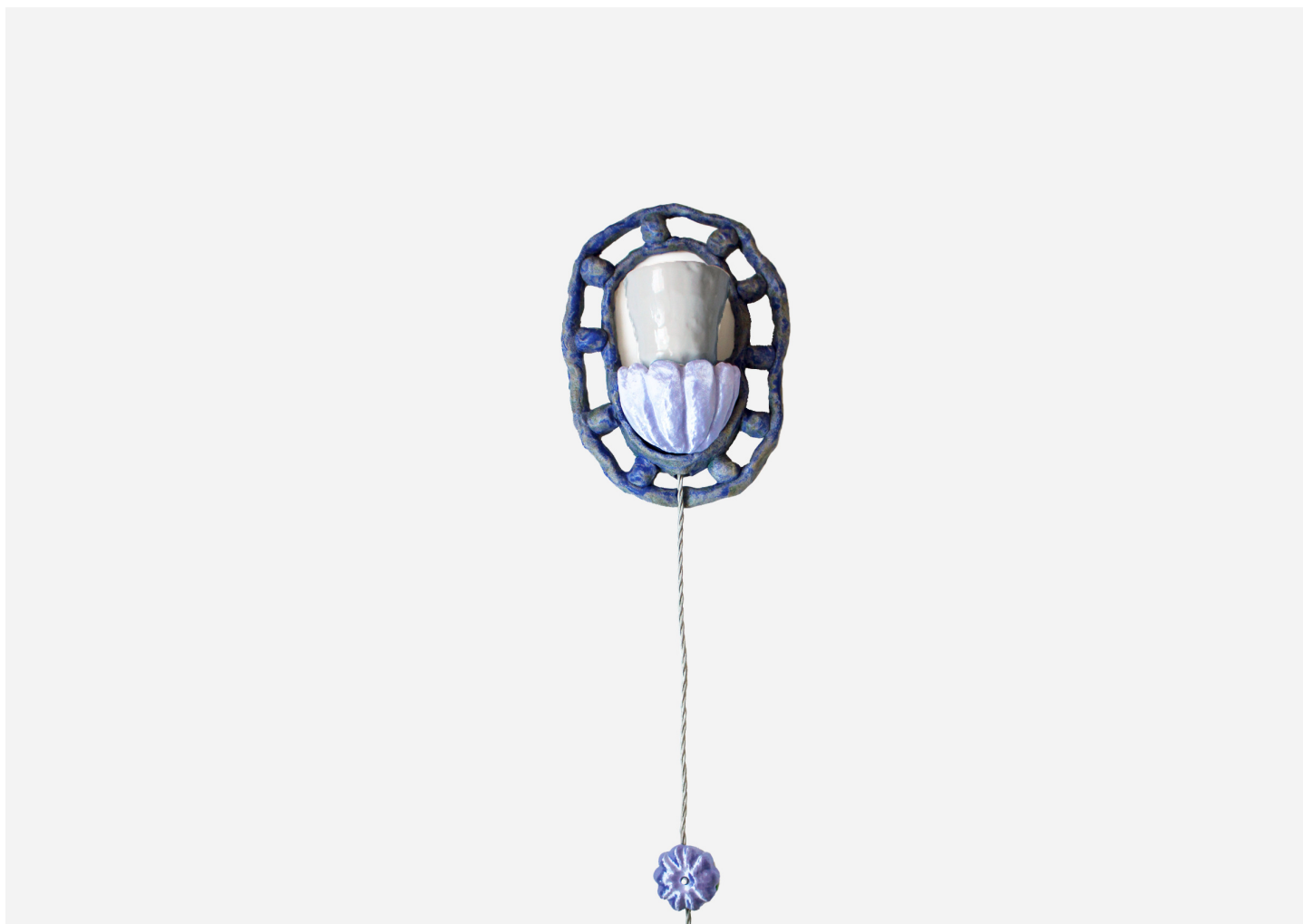


BUBBLE ARCH LILAC SCONCE 2

NATALIA TRIANTAFYLLI



DESIGNER
Natalia Triantafylli

ORIGIN
United Kingdom

PRODUCTION
One of a Kind

DATE
2024

MATERIALS
Stoneware, Parian Porcelain Shade & 3D Printed PLA.

DIMENSIONS
L 7.1" x W 7.1" x H 11.8"

ILLUMINATION
110v LED E14, golf shape bulb required. Bulb not included.