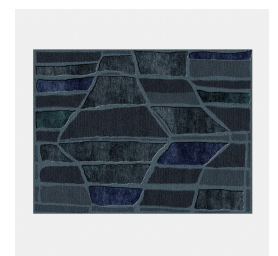
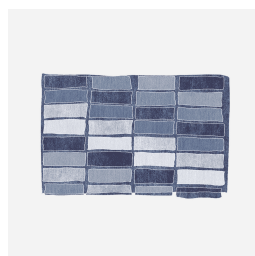
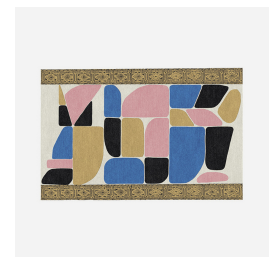
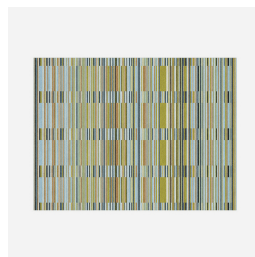
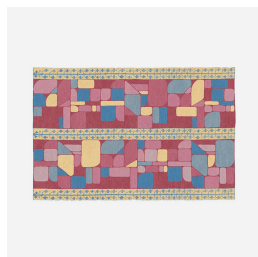
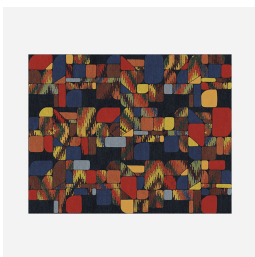
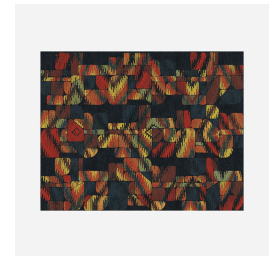
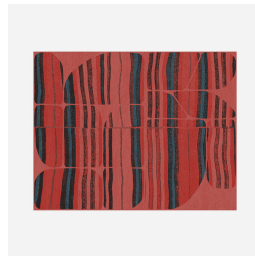
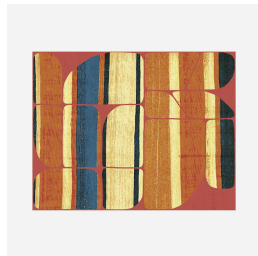
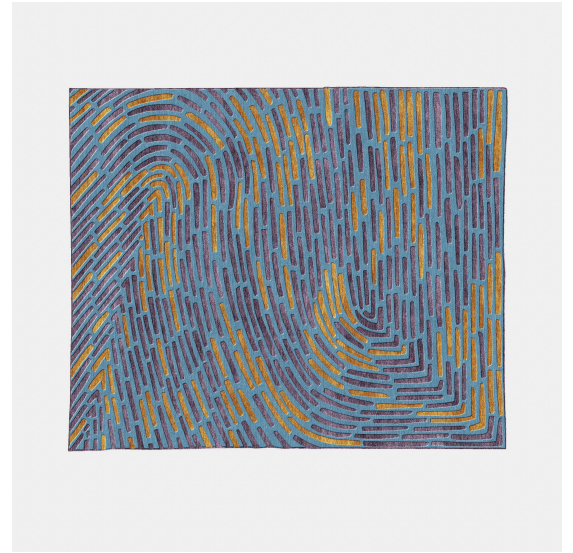
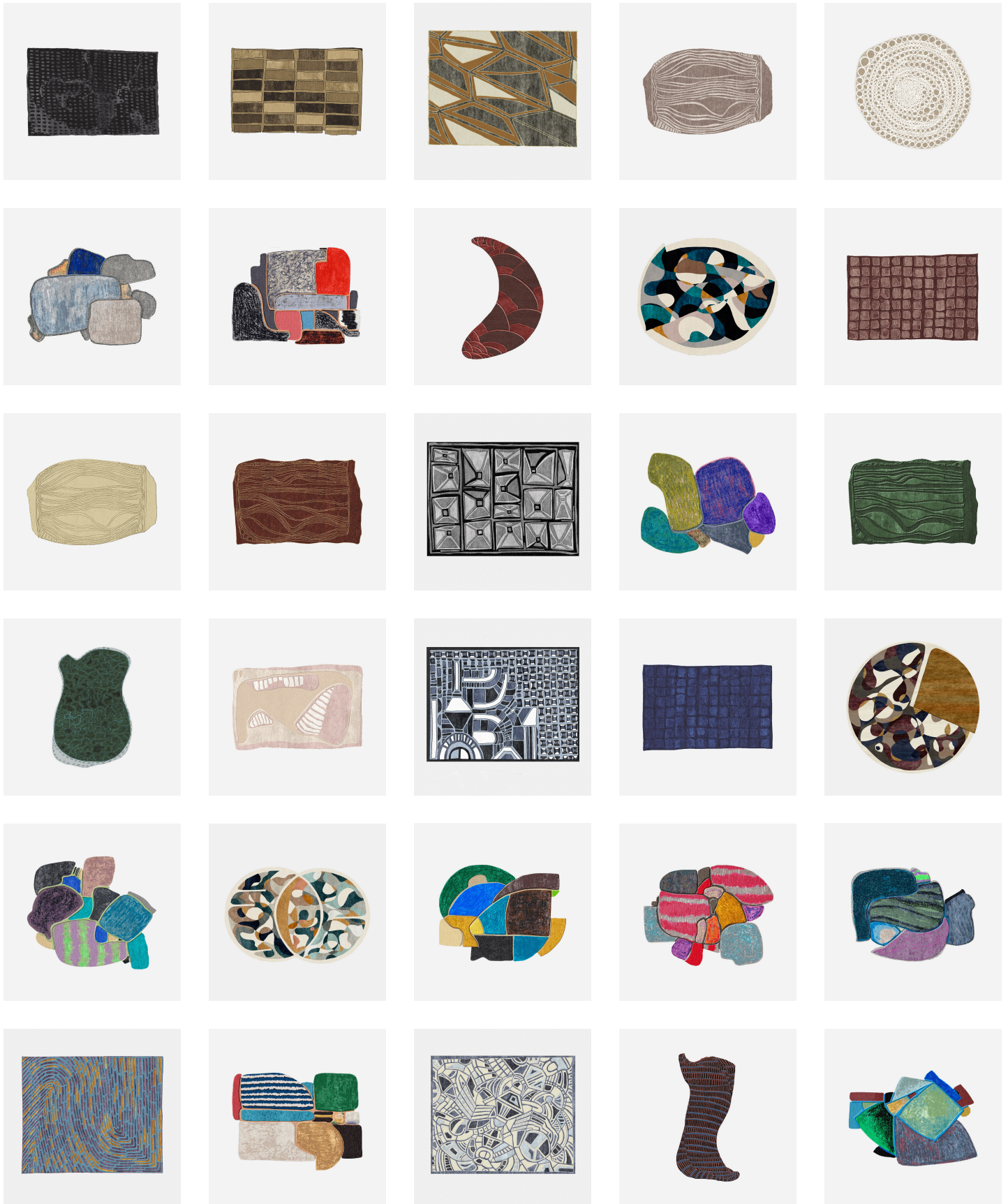


BALMACEDA

This incredibly exciting firm, based in Mexico City and headed by chief designer José María Balmaceda, specializes in rugs that are authentic and rooted in global and historical craft traditions. These rugs occupy a unique stylistic position, from which they may center any story both compositionally and conceptually. José María Balmaceda's work is the result of a background in fashion and costume design and eventually the intertwining of his Mexican heritage with the work of artisans from India and Nepal.



BALMACEDA



BALMACEDA

